

Display Report

Analysis Info

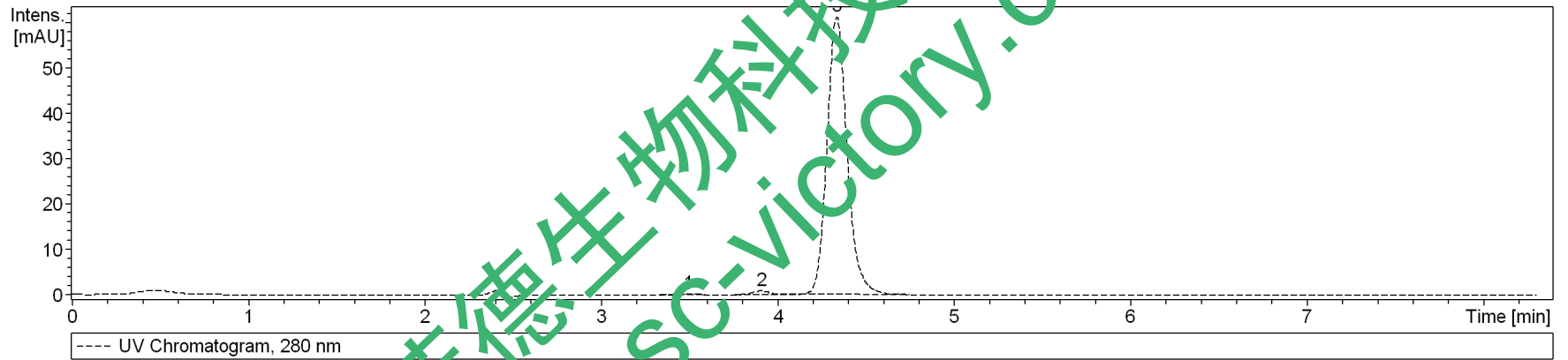
Analysis Name D:\Data\test\0713\guijiudusu_98_01_1919.d
Method 1919.m
Sample Name guijiudusu
Comment

Acquisition Date 7/13/2015 2:29:17 PM

Operator bruker
Instrument amaZon SL

Acquisition Parameter

Ion Source Type	ESI	Ion Polarity	Negative	Alternating Ion Polarity	on
Mass Range Mode	UltraScan	Scan Begin	70 m/z	Scan End	1000 m/z
Capillary Exit	-140.0 V	n/a	n/a	Trap Drive	50.6
Accumulation Time	115432 μ s	Averages	5 Spectra	Auto MS/MS	off



#	RT [min]	Area	Height	Area Frac. %
1	3.5	1.3593	0	0.3
2	3.9	6.1844	1	1.2
3	4.3	487.5652	1	98.5

Display Report

Analysis Info

Analysis Name D:\Data\test\0713\guijiudusu_98_01_1919.d
Method 1919.m
Sample Name guijiudusu
Comment

Acquisition Date 7/13/2015 2:29:17 PM

Operator bruker
Instrument amaZon SL

Acquisition Parameter

Ion Source Type	ESI	Ion Polarity	Negative	Alternating Ion Polarity	on
Mass Range Mode	UltraScan	Scan Begin	70 m/z	Scan End	1000 m/z
Capillary Exit	-140.0 V	n/a	n/a	Trap Drive	50.6
Accumulation Time	115432 μ s	Averages	5 Spectra	Auto MS/MS	off

